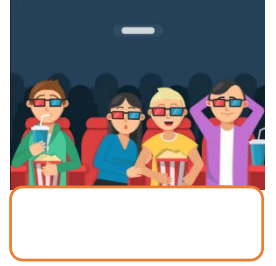
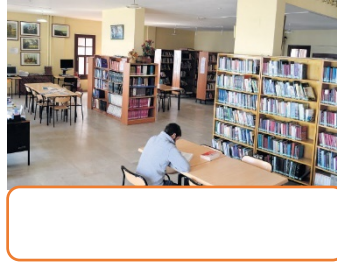
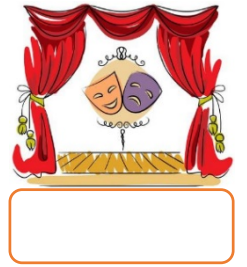
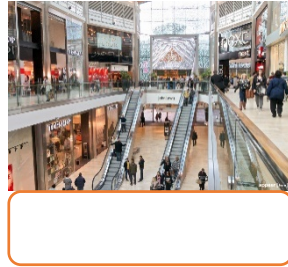
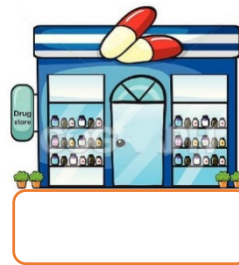
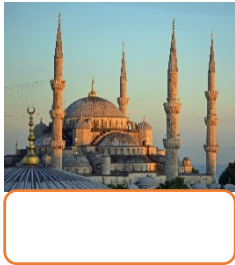
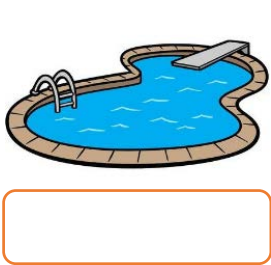
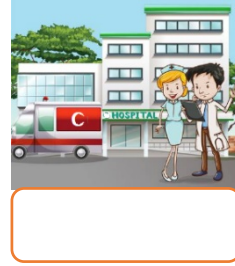
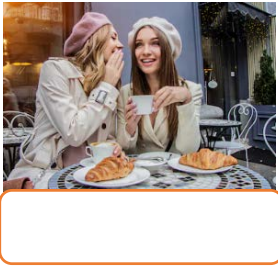
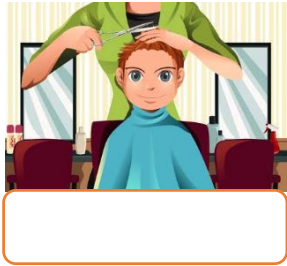
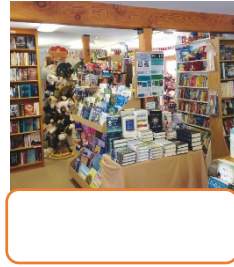
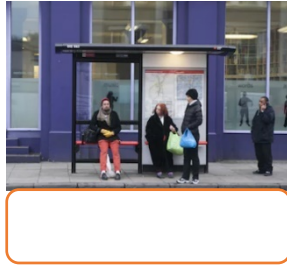
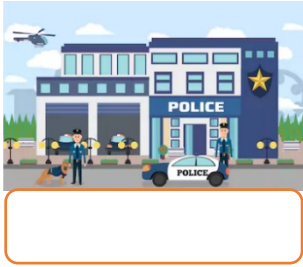
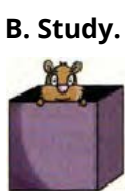


A. Write the names of the places under the pictures.

butcher's - café - swimming pool - pharmacy - mall - mosque - post office - restaurant - bus stop
 fire station - bank - Internet café - playground - library - hospital - cinema - school - stationery - theater
 museum - city hall - car park - police station - toy shop - barber's - bakery - bookshop - grocery



B. Study.



in



on



next to



between



around



opposite

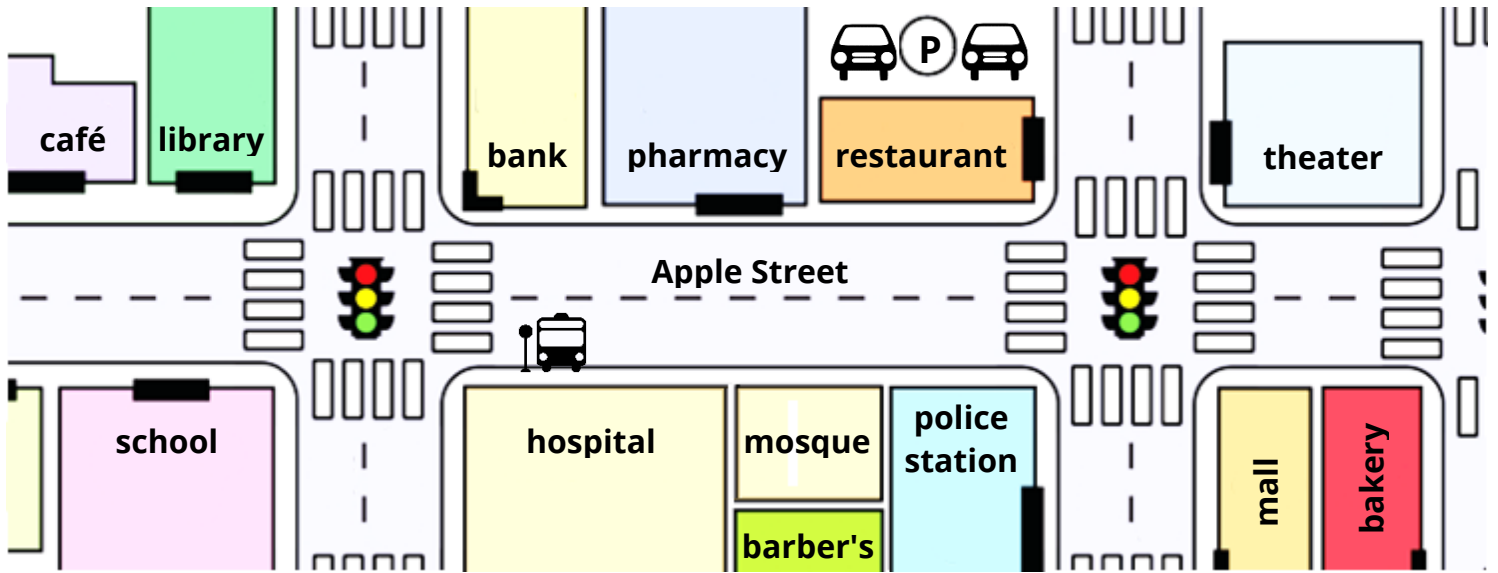


behind



in front of

C. Look and complete the sentences.

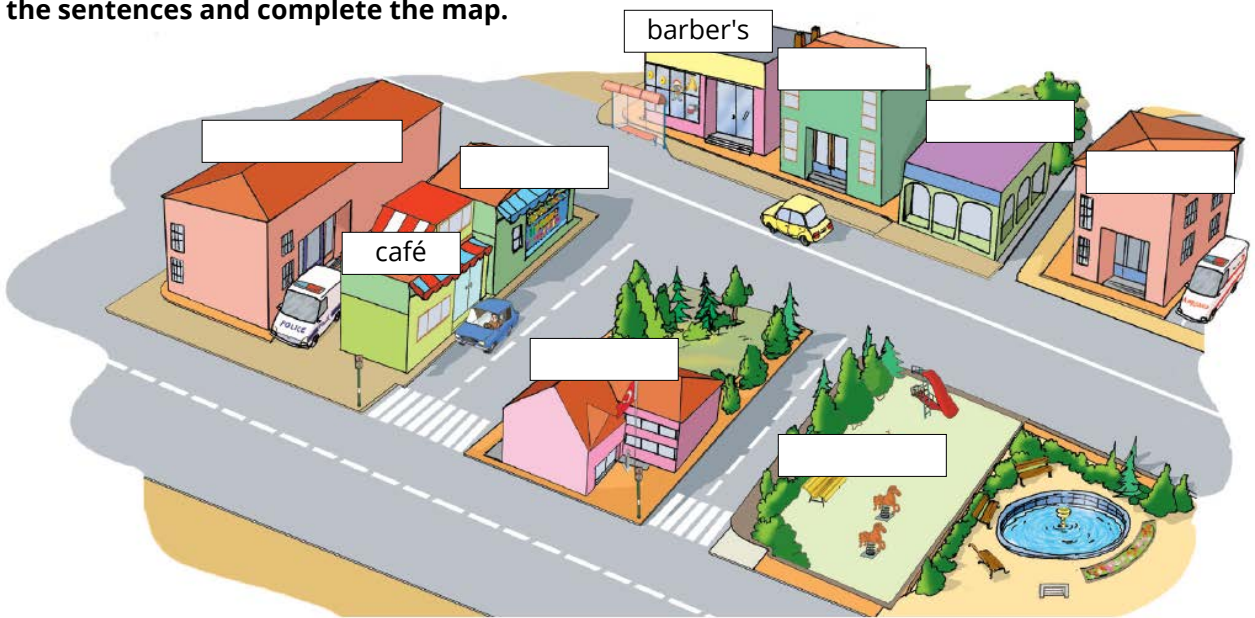


1. The hospital is Apple Street.
2. The pharmacy is the hospital.
3. The pharmacy is the bank and the restaurant.
4. The bus stop is the hospital.
5. The café is the library.
6. The barber's is the mosque.

D. Look at the picture above and answer the questions.






1. Where's the mall?
.....
2. Where is the car park?
.....
3. Where's the mosque?
.....

E. Read the sentences and complete the map.

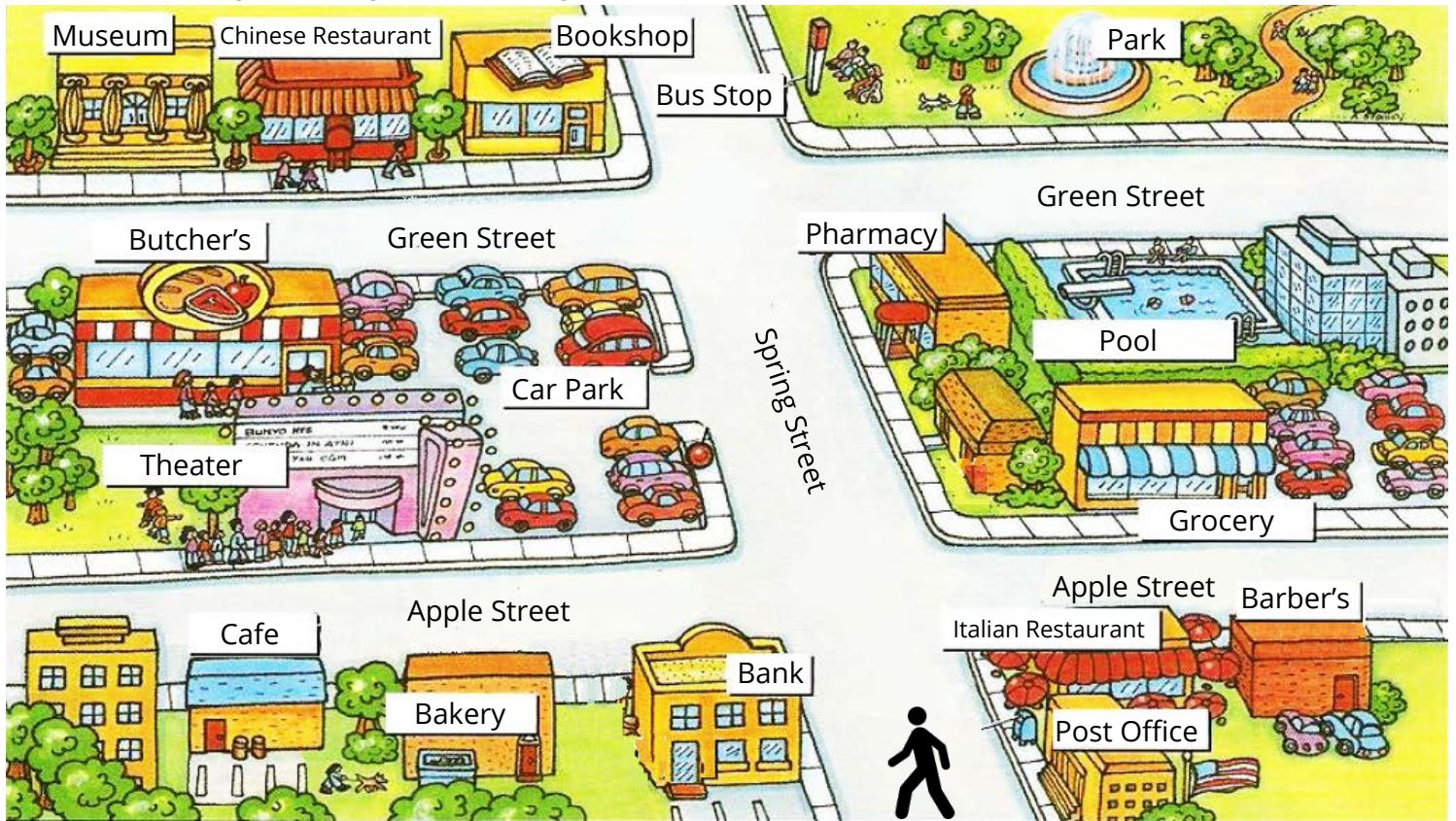


Here's a map of my neighborhood. The butcher's is next to the café. The toy shop is next to the barber's. The cinema is between the toy shop and the hospital. The school is opposite the café. The police station is behind the café and the butcher's. The playground is opposite the school.

F. Study.

				
Go straight ahead.	Turn right.	Turn left.	It's on the left.	It's on the right.

G. Look at the map and complete the dialogues.



A: Excuse me, where's the barber's?
B: Go straight and then turn into Apple Street. It's on the opposite the grocery.
A: Thank you very much.
B: 1

A: Excuse me. How can I get to the bakery?
B: Go straight and then turn into Apple Street. It's on the next to the bank.
A: Thank you so much.
B: 2

A: Excuse me, is there a pool near here?
B: Go straight and then turn into Green Street. It's on the opposite the park.
A: Thank you.
B: 3

A: Excuse me, where's the butcher's?
B: Go straight and then turn into Green Street. It's on the opposite the museum.
A: Thanks.
B: 4

A: Excuse me. How can I get to the Chinese Restaurant?
B: Go straight and then turn into It's on the between the museum and the bookshop.
A: Thanks a lot.
B: 5

A: Excuse me, is there a park near here?
B: Go straight and then turn into Green Street. It's on the opposite the pool.
A: Thank you very much.
B: 6

A: Excuse me, where's the?
B: Go straight ahead and then turn left into Apple Street. It's on the right next to the car park.
A:
B: You're welcome. 7

A: Excuse me, I get to the?
B: Go straight ahead and then turn right into Apple Street. It's on the left opposite the barber's.
A:
B: Not at all. 8

A: Excuse me, is there a near here?
B: Go straight ahead and then turn into Green Street. It's on the opposite the car park.
A:
B: You're welcome. 9

H. Look at the pictures and complete the dialogues.



Mark



Susan



Mehmet



Lisa and Julia

A: Hello!
B: **Hi! This is Tom. Is Mark at home?**

A: No, he isn't.
B: **Where is he?**

A: He is at the

A: Hello!
B: **Hi! This is Liz. Is Susan at home?**

A: No, she isn't.
B: **Where is she?**

A: She is at the

A: Hello!
B: **Hi! This is Ali. Is Mehmet at home?**

A: No, he isn't.
B: **Where is he?**

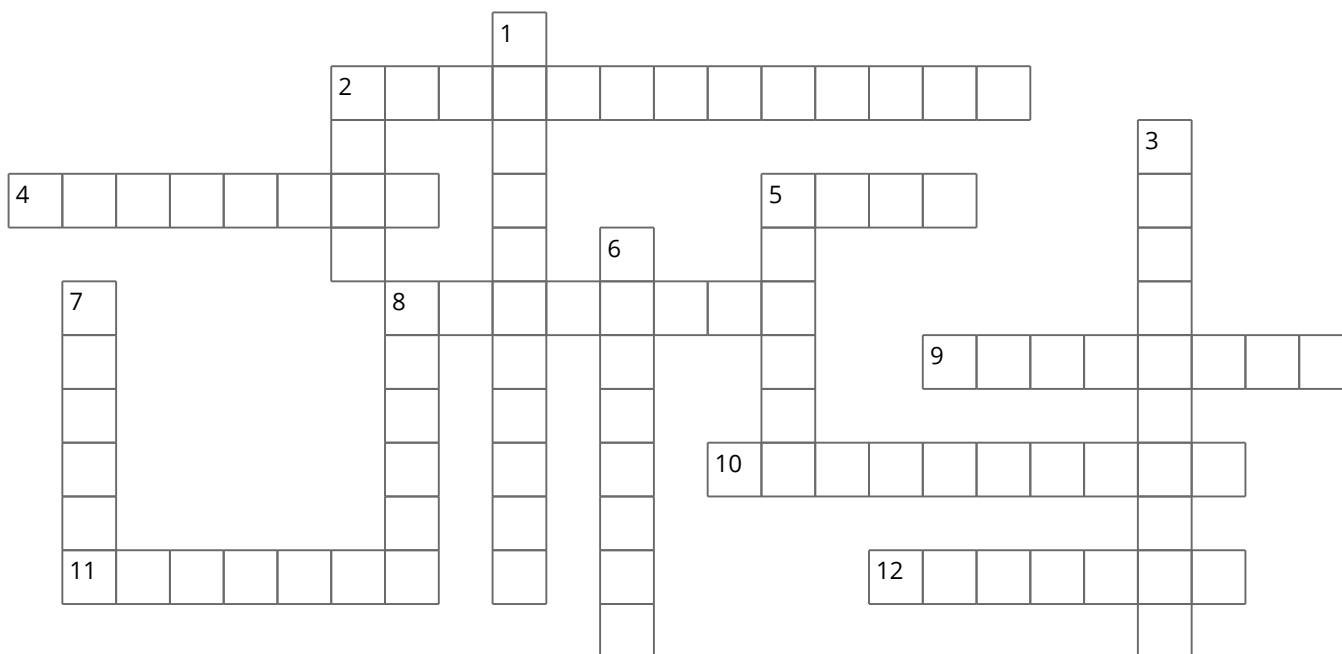
A: He is at the

A: Hello!
B: **Hi! This is Lucy. Are Lisa and Julia at home?**

A: No, they aren't.
B: **Where are they?**

A: They're at the

I. Using the Across and Down clues, write the correct words in the numbered grid below.



ACROSS

2. Police forces work at the
4. You buy books from the
5. You do shopping at the
8. You buy meat from the
9. You see doctors at the
10. You eat in the
11. You read books in the
12. You buy food from the

DOWN

1. Fireman works in the
2. You swim in the
3. You buy notebooks and pencils from the
5. Muslims pray 5 times a day at the
6. You buy medicine from the
7. You have classes at the
8. You buy bread from the

J. Put the words into correct order to make sentences.

1. very - thank - much - you - .
2. next to - it's - the cinema - .
3. is - the post office - where - ?
4. go to - can - How - I - the hospital - ?
5. all - not - at - .
6. a pool - there - near - is - here - ?